

Gábor Fábián

DLA essay

Thesis booklet

Content focusing.

Summary introduction of the
results of individual artistic
creative activity

supervisor

Dr habil Zsolt Vasáros DLA
masterwork

Arkt Art Centre

DLA School, BUTE

2018, Budapest

“Naturality... That would be the aim... Natural, straightforward, obvious, becoming a logical fact, which lacks every cramping, insecurity, waywardness, noisiness, hurtful loudness. To draw lines, construct spaces, paint colours, conjure feelings, that are the most natural characters of the story, in that specific time, on that specific place.”

Architecture is intended to fulfil the needs of a certain time. The world is constantly changing, therefore architecture is continually renewed to satisfy different trends and styles. These changes happen more frequently in the modern world. Nowadays we can't talk about a unified style. Art-works can be judged and organised by the given responses for the changing circumstances and chosen behaviour-models.

Thanks to the economic regression the needs of society and individuals transform during a short time. We constantly react on the changing conditions. Thanks to the fast runoff of this process the change in designers' behaviour can be easily detected.

The follow up photo-essay shows the development through the presentation of the independent creative work in a chronological order. The creative art-work is more complex than just planning. It involves a considerable amount of research and experimenting on different styles and ideas. This dissertation is intended to be an interpretation of the procedure mentioned above. It uses art-works as a case study, focusing on what they meant to say. They present each building in drawings and photos in order to avoid long descriptions. The dissertation includes quotations as references to make it easier to place the thoughts of the designer into the right time frame.

The aim is to help the reader take in new contemporary architecture and to understand it. In our work we are looking for the appropriate tools to reach this aim and to find the obvious answers.

During the designing process architects make decisions. These decisions are influenced by pressures from inside as well as outside. In need the fundamental questions come into focus while the unnecessary ones disappear. Identifying the essentials is very important. The quality of the choices show improvement in time and, therefore, the structure of this dissertation is based on change. Going forward in time in the deeper the crisis the more the opportunities are narrowed down. This is reflected in different parts of this text. In this dissertation I have focused my attention on the more important questions.

thesis n°1

Before the recession, typically, the architects had a bigger freedom in their planning, due to the good financial situation. An entrant architect's role in the planning process is not of full value. Getting to know the client and many times even the location are pushed into the background, the intensity of the relationship is low. First, because if the distance in space, and communication as well, I was searching for answers through construction and through defining inner principals.

Through the designing process beyond the building specifications and the characteristics of the location we set some other rules. These rules we strictly set for ourselves had a motivating influence on the creating process. The limitations of the system, the functional connections and the size restrictions didn't cause any set back, instead they helped our decisions, by narrowing down the number of possibilities.

Limitation and possibility are not opposites of each other. The pressure from inside and outside seems to limit the designer's freedom, but in reality, it results in clearer decision making situations, which leads to solutions.

004



Four-family condominium
Budapest, 2009

thesis n°2

The crisis had a sobering effect on the architecture, and made it turn into a logical, sustainable and more appropriate direction. According to the more moderate living conditions in the country side, the planning tasks stayed on the ground of reality. We use simple details and constructing methods to normalise the expenses. In contrast with the earlier building styles—where the aim was to keep the levelling, resulted in a seemingly simple solution, now the aim is simplification and the desire to keep the structures clear and simple. There are less ornaments and fancy elements due to the simplification. However to satisfy our clients wishes we make sure that we fulfil all their demands relevant to the function of the building, and to insure the pleasure so they could take in the view too. Our decisions are primarily influenced by reasonable responses to environmental factors.

If an idea can be reasoned logically, it satisfies the demands and it can even give pleasure, then the expected conventions related to aesthetics, shape and surface can be pushed to the background.

006



Single-family residence
Felsőtárkány, 2011

thesis n°3

In the last couple of years, due to the economic setback, the question of the use of the already existing buildings, their revitalisation came into focus. We based our decisions during the reconstruction and construction the new function system on the following principals: conserving the existing values and showing the historical continuity of the buildings.

The presentation of continuity is storytelling. It pictures the past and the present, while it also reports feelings. Due to its continuity in time and linear structure it is easily understood and taken in. The supplementary parts are well reasoned, the final creation is self-evident. The layers built on each others in time create an intermediate place, where something new is happening. This border-line situation gives pleasure and new experiences.

During the reconstruction of old buildings showing the new and the discovered structures and materials can be a tool of expressing continuity. The intention of showing continuity is a decision which results in positive judgement.

008



Fusion - Gál Tibor Winery
Eger, 2011

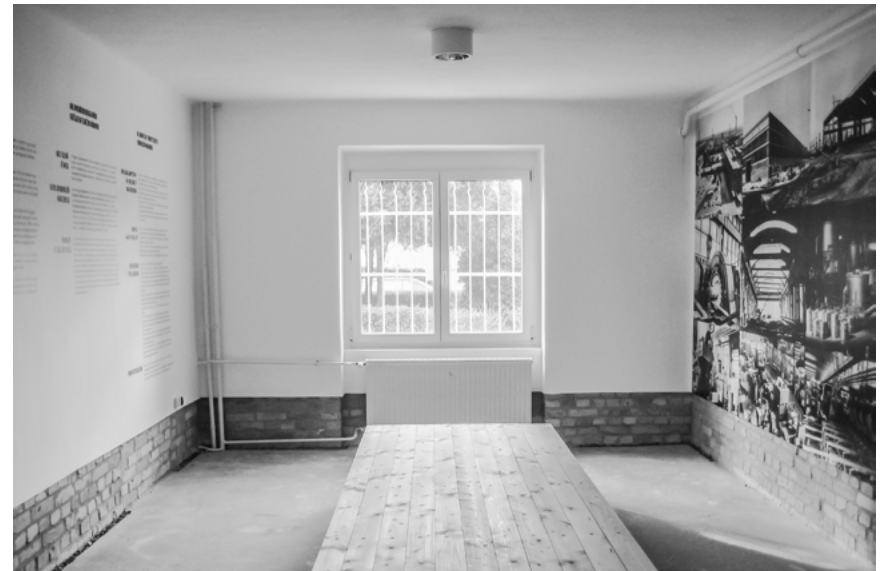
thesis n°4

The restrictions, thanks to the low economic situation and the wrongly prepared projects, give opportunities for executing low budget projects.

With limited budget renovations, the decisions are based on the technically necessary interventions or on building in new functions. The technical contents and technical solutions need to be adjusted to the available resources. Treating a building as a whole, these changes can only be partial solutions. Finding the right intervention that the budget allow, highlighting the point is an essential task for both the architect and the client. To achieve this, every participant needs to change their point of view.

Finding the right level and pace of an intervention during low budget project improves the ability of finding the right focus. Setting the content right is necessary during the execution of a limitedly financed project.

010



Aluminium Industry Museum
Székesfehérvár, 2012

thesis n°5

The Arkt Arts Centre, which was chosen as an masterwork, was conceived in 2013, as a large proportion of our time and mental capacities were liberated on account of the economic recession. Throughout our work, we experiment with different renovation strategies, in terms of design as well as financing. Out of this impulse, as our own initiative, we contacted the local government to provide us a building that no one found the inspiration to refurbish and was too expensive to maintain. We received the building for a 15-year lease. We had outlined a sustainable model hinged on local needs: we had undertaken to implement a value-added reconstruction and fill the building with cultural content.

In a collaboration involving the social sphere, the institutional sphere, and the construction industry, we managed to realize an exemplary renovation, making the most efficient use of only already available resources, entirely without seed capital and cash flow. The greatest added value of the project turned out to be the growing social network of organizers and collaborators.

Getting the local community involved in crisis can give an opportunity for reformation. During working as a community to build there is not just a building that's built but the community as well. The planning process gets a new meaning, and the building process rises to another, communal level.

012



Arkt Arts Centre (Ellátó)
Eger, 2013–2015

thesis n°6

In order to make the “Ellátó” achievable, we reversed the usual course of planning: first, we found material support for the required tasks and then came up with architectural solutions to match the materials offered by sponsors. Our decisions were based on the available architectural tools, coming from the sponsors and the materials found on site. Therefore the process became straight forward.

During the renovation of the “Ellátó” we made certain changes on the building which were necessary for the shaping of its new function. We were looking for the technically necessary, but also satisfactory results when we defined our claims, and aesthetic desire which could be achievable with our limited finance. Keeping the possibilities in mind but stepping away from the conventions we didn't try to make it perfect. The project is permanently on the verge of achieving completion, compensating this with the quality of details and by giving unusual function to some components.

The need creates opportunities to accept the unexpected. The uncommon, strange architectural product, which is a result of limited financial conditions, helps to see, realise the new connections in meanings. It gives aesthetic joy and understanding.

014



Arkt Arts Centre (Ellátó)
Eger, 2013–2015

Gábor Fábián: Content focusing
DLA essay – Thesis booklet

Paper: Pergraphica Classic 120 g/m²
Typeface: Basier Circle, Klartext Mono
Graphic Design: Veronika Juhász
Print: Monobit Nyomda Ltd.

DLA School, BUTE
2018, Budapest